

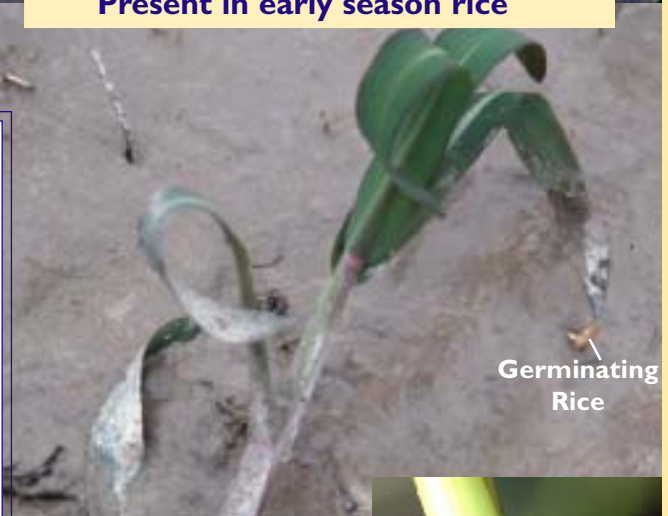
Perennial Grasses Infesting Louisiana's Rice

Water Paspalum

Paspalum hydrophilum



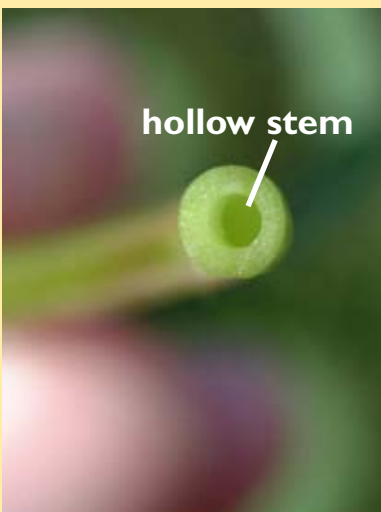
Present in early season rice



Germinating
Rice

Water paspalum Keys to Identification

- Hollow Stem - common only to water paspalum
- Prominent white leaf midvein
- Glabrous - no pubescence (hair) at nodes
- Leaf blade wide in proportion to stem
- Membranous ligule - no pubescence



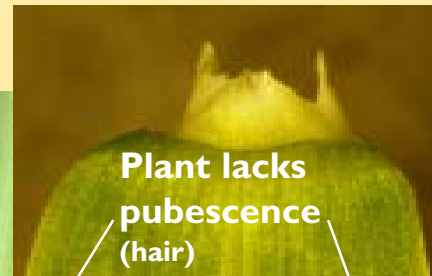
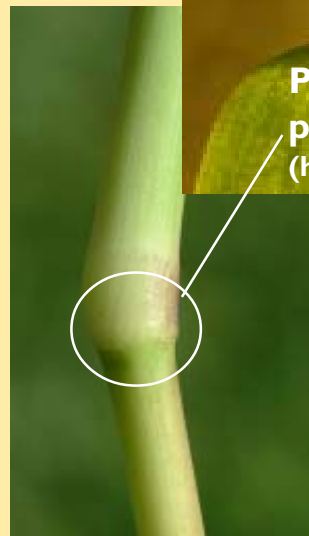
Brook Paspalum

Paspalum acuminatum



Brook paspalum Keys to Identification

- Solid Stem
- Rachis (stem bearing seeds) winged
- Plant lacks pubescence (hair at nodes)
- Leaf blade wide in proportion to stem
- Membranous ligule - no pubescence



Acknowledgments

Ron Strahan, Extension Associate, LSU AgCenter
 Johnny Saichuk, Rice Specialist, LSU AgCenter
 Shane Theisumm, Extension Associate, LSU AgCenter
 Eric Webster, Assoc. Professor, Dept of Agronomy, LSU AgCenter
 Bill Williams, Assoc. Professor, NE Research Station, LSU AgCenter

Knotgrass

Paspalum distichum



Leaves may appear blue after fertilizer is applied.

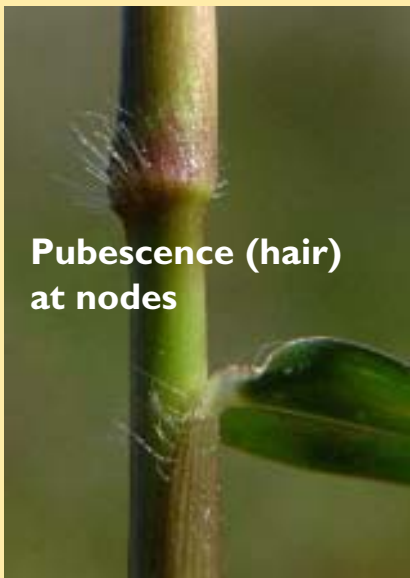


Seed Head

Knotgrass

Keys to Identification

- Solid Stem
- Leaf midvein not prominent
- Pubescence (hair) at nodes
- Leaf blade narrow in proportion to stem
- Membranous ligule with pubescence (hair) at collar region

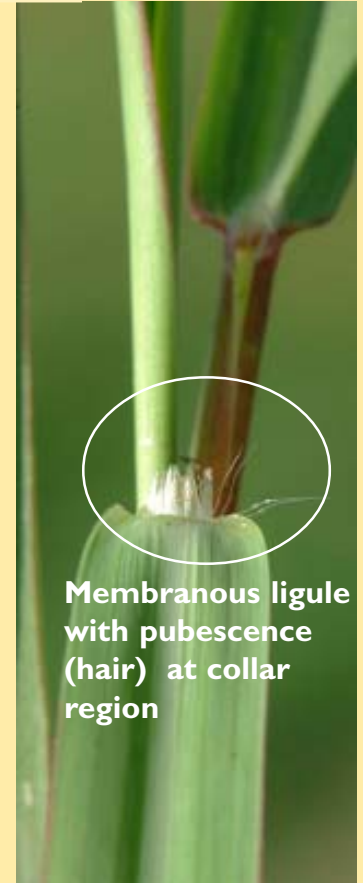


Pubescence (hair) at nodes

Solid Stem



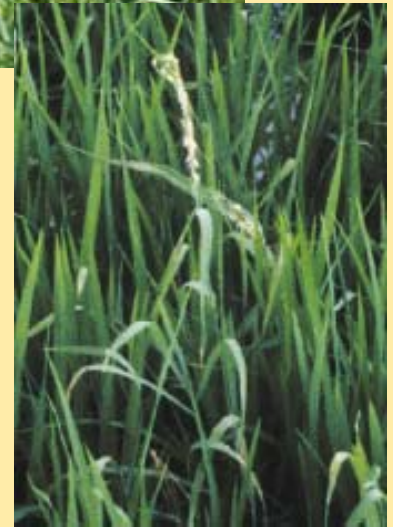
Leaf blade narrow in proportion to stem



Membranous ligule with pubescence (hair) at collar region

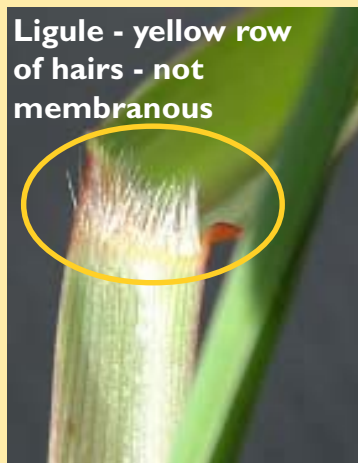
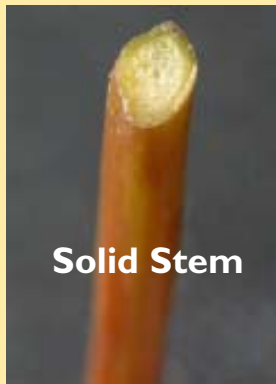
Perennial Barnyardgrass

Echinochloa polystachya



Perennial Barnyardgrass Keys to Identification

- Solid Stem
- Leaf midvein somewhat prominent
- Leaf blade narrow in proportion to stem
- Ligule - yellow row of hairs - not membranous



Visit our Web site: www.lsuagcenter.com

Louisiana State University Agricultural Center
 William B. Richardson, Chancellor
 L. J. Guedry, Executive Vice Chancellor
 Louisiana Agricultural Experiment Station
 William H. Brown, Vice Chancellor and Director
 Louisiana Cooperative Extension Service
 Paul D. Coreil, Vice Chancellor and Director
 Pub. XXXX

(1M)

2/02

Issued in furtherance of Cooperative Extension work, Acts of Congress of May 8 and June 30, 1914, in cooperation with the United States Department of Agriculture. The Louisiana Cooperative Extension Service provides equal opportunities in programs and employment.