

# 2001 Plant Disease Control Guide

Most of the links to the disease information is in Adobe PDF format, this requires the free [Acrobat Reader](#).



## Table of Contents

### [Introduction](#)

### [Authors & Contributors](#)

### [In Case of Poisoning](#)

### [The Safe Use of Pesticides](#)

[Instructions](#) for Collection, Preparation and Shipping Plant Specimens to the Plant Disease Clinic

### **Field Crops**

[Corn](#)

[Cotton | Cotton Seedling](#)

[Grain Sorghum](#)

[Oats](#)

[Peanuts](#)

[Rice](#)

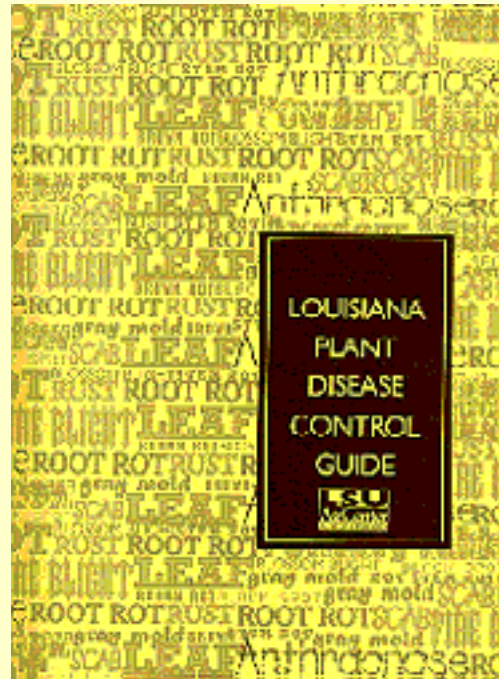
[Soybeans](#)

[Sugarcane](#)

[Wheat](#)

### **Fruit Crops**

[Apples](#)



### NOTICE

Some of the pesticides or certain uses of pesticides in this publication may be classified for restricted use. It is unlawful for a non-certified applicator to use a pesticide which has been classified with restricted uses. Information on pesticide applicator certification programs may be obtained from the Louisiana Cooperative Extension Service.

## Introduction

This Plant Disease Control Guide is revised yearly. The most important or more prevalent diseases of the more common or important plants are included in this edition. The suggestions for disease control are based on the

[Blackberries](#)

[Blueberries](#)

[Citrus](#)

[Grapes](#)

[Mayhaws](#)

[Peaches and Plums](#)

[Pears](#)

[Pecans](#)

[Strawberries](#)

## [Ornamental Crops](#)

### [Christmas Trees](#)

### [Turfgrass Diseases](#)

## [Commercial Vegetables](#)

### **Nematode Control**

[Field Crops](#)

[Fruit Crops](#)

[Ornamentals](#)

[Commercial Turfgrass](#)

[Commercial Vegetable Crops](#)

[Home Gardens](#)

### **Seed Treatment**

[Field Crops](#)

[Vegetables](#)

[Soil Fumigants, Fungicides, Decontaminates](#)  
for Greenhouse and Plant Beds

[Appendix](#) - Trade Names of Fungicides and  
Nematicides Listed Alphabetically

[Names](#) and Formulations of Fungicides and  
Nematicides

best information available. The control program in general is based on research conducted by Louisiana State University Agricultural Center personnel in the Agricultural Experiment Station, in cooperation with the USDA. In some cases, research results and plant disease guides from nearby states were used as a basis for the control measures suggested.

Many fungicides are sold for the control of plant diseases but, because of space limitations, only a few are listed. Reference to commercial products or trade names is made with the understanding that no discrimination is intended and no endorsement of particular products by the Louisiana State University Agricultural Center implied. Always use pesticides safely. Read the label and follow safety precautions. Do not eat or smoke while dusting or spraying. Store pesticides in original containers and out of the reach of children, pets or livestock.

## **The Safe Use of Pesticides**

### **General Safety Instructions:**

Know the pest.

Use pesticides only when needed.

Always ask the advice of an

## **In Case of Poisoning**

The National Pesticide Telecommunications Network and the Louisiana Drug and Poison Information Center offer complete information on antidotes and treatments of pesticide poisoning, as well as other toxic materials.

NATIONAL PESTICIDE

TELECOMMUNICATIONS NETWORK

1-800-858-7378

(1-800-858-PEST)

6:30 a.m. to 4:30 p.m. PST - 7 Days A Week

LOUISIANA DRUG AND POISON  
INFORMATION CENTER

1-800-256-9822 (Louisiana Only)

318-342-1710 (Drug Information)

24 Hours A Day

## **Instructions for Collection, Preparation and Shipping Plant Specimens to the Plant Disease Clinic**

No one method of preparation for shipping of plant materials will assure their satisfactory arrival in the laboratory. Following the suggestions given below will ensure that specimens will be received in good condition.

Specimens completely desiccated or in advanced states of decay and those which arrive without supporting information will have to be discarded. This represents time and labor wasted for the sender and personnel at Louisiana State University. Note: Findings reported are necessarily based on examination of the material submitted. Some diagnoses require intensive studies. Because the time devoted to individual specimens must necessarily be limited, reports, while reflecting considered opinion and best judgment, may not always be statements of established fact. Follow instructions in the sections outlined below:

authority on problems of pests and pesticides.

Use only the recommended pesticide for the problem.

Know how effective the pesticide is and any hazards it might present.

Read the label - read it all - even the small print.

Commercial pest control operators, farmers and other applicators or large quantities or organophosphorus pesticides should contact their physicians at the beginning of the season, or before using these materials, and submit to a blood test. At this time the person(s) should inform the physician of the types of pesticides he will be using. A good understanding should be established between the employer, the applicator and the physician regarding the availability of the physician's services and certain standard charges for such services. While discussing the pesticides to be used, be sure your physician has a current list of phone numbers for the Official Poison Information Centers in case he or she is not familiar with all of the types of pesticides, their antidotes, as well as signs and symptoms of pesticide poisoning.

Know what you are to do in the event of an accident. PLAN

## For Plant Disease Diagnosis

Plants showing wilting, yellowing or general decline:

1. Send whole plants including roots, if practical. Be sure to send plants showing early stages of disease.
2. Dig up carefully (don't pull up).
3. Send sample of soil and feeder roots in plastic bag. Seal to avoid loss of moisture.

### Cankers:

1. Select specimens from recent infestations. Send entire cankered portion, if possible, with some of the healthy wood above and below the canker.
2. Branches and twigs that have been dead for several months are useless for identification.

### Leaf spots:

1. Collect leaves showing early and late stages of infestation.
2. Press leaves between cardboard so they will not crumble.
3. It is usually not possible to diagnose marginal burning or other injury symptoms on leaves.

### Fleshy organs:

1. Rots of fleshy fruits and vegetables need special attention. Do not send those in advanced stages of decay.
2. Select fresh specimens showing early symptoms.
3. Place specimens in plastic bag. Do not add extra moisture. Fleshy vegetables and fruit specimens should be wrapped separately. Keep

AHEAD. Call your physician immediately if an accident occurs.

Have your physician's phone number posted by your phone. In an emergency, time is extremely important.

Consider wearing a Medic-Alert emblem.

Take time to explain the safe use of pesticides to employees. Make sure they understand.

Check your application equipment for leaks, clogged lines, nozzles and strainers.

Calibrate your equipment frequently for proper output. Use water or other inert materials.

Check respirator for cleanliness, clean filter and proper fit.

Check gloves and other protective clothing for holes and cleanliness before each use.

Make sure plenty of clean water, soap, towels and a clean change of clothing are available.

Do not permit delivery of pesticides unless a responsible representative is on hand to receive and properly store them.

Make sure humans have been warned and livestock and pets that may be exposed have been

cool until shipped.

### **Nematodes:**

1. Late summer and fall are best times to take nematode samples.
2. Nematode samples require at least one pint of soil from approximately 20 random soil probes. Mix soil together and mail in plastic bag placed inside LSU Ag Center soil box.
3. Sample must be accompanied by nematode assay form with required information.
4. Protect sample from heat and light.

### **Packaging and mailing:**

1. Enclose a completed Plant Disease Identification Form with each sample.
2. Wrap package in heavy paper. Attach envelope enclosing clinic form to outside of package.
3. Identify package with both outside and inside labels; don't put inside label in contact with moisture.
4. Address package to: Plant Disease Clinic, P. O. Box 25100, Baton Rouge, La. 70894-5100.
5. Mail packages to arrive on week days (Monday through Friday) rather than during weekend.

**Remember:** The better the specimens, the more accurate the diagnosis.

removed from the area to be treated.

Cover food and water containers.

Check the label to make sure the time intervals between date of application and harvest, slaughter or milking will comply with those given on the label.

### **Authors & Contributors**

Kenneth Whitam  
Specialist (Plant Pathology)

Clayton A. Hollier  
Specialist (Plant Pathology)

Charles Overstreet  
Specialist (Plant Pathology)

Acknowledgment is given to the following for their contributions in the areas noted:

### **LOUISIANA COOPERATIVE EXTENSION SERVICE**

Jack L. Bagent, Vice Chancellor and Director

Jack Baldwin, Specialist (Entomology) - Soybeans

James E. Boudreaux, Specialist (Horticulture) - Vegetables

James M. Cannon, Specialist (Horticulture) - Commercial Vegetables

Benjamin L. Legendre, Specialist (Agronomy) - Sugarcane

Mary L. Grodner, Specialist (Pesticide Safety)

Thomas J. Koske, Specialist

(Horticulture) - Vegetables and  
Turf

Bob Mills, Specialist (Forestry)

Walter C. Morrison, Specialist

(Agronomy) - Soybeans and Feed  
Grains

Dale Pollet, Specialist

(Entomology) - Insect Control

John Pyzner, Associate Specialist

(Horticulture - Pest Management)  
Fruits

Dennis Ring, Associate Specialist

(Entomology) - Rice

Johnny Saichuk, Associate

Specialist (Agronomy) - Rice,  
Grain Sorghum

Randy Sanderlin, Associate

Professor (Plant Pathology) -  
Pecan Diseases

Ed Twidwell, Specialist

(Agronomy) - Pasture and Forage,  
Small Grains

**LOUISIANA  
AGRICULTURAL  
EXPERIMENT STATION**

Dept. of Plant Pathology and  
Crop Physiology

C. A. Clark, Professor - Sweet  
Potato Diseases

K. E. Damann, Jr., Professor -  
Sugarcane Diseases

Gordon Holcomb, Professor -  
Ornamental Diseases

J. W. Hoy, Professor - Sugarcane  
Diseases

John P. Jones, Professor - Forest  
& Shade Tree Diseases

E. C. McGawley, Professor -  
Soybean Nematology

M. C. Rush, Professor - Rice  
Diseases

## Branch Stations

Don Boquet, Professor -  
Agronomy, Northeast Research  
Station

Pat Colyer, Professor - Plant  
Pathology, Red River Research  
Station

Charles Graham, Assistant  
Professor - Horticulture, Calhoun  
Research Station

Don E. Groth, Professor - Plant  
Pathology, Rice Research Station

Bob Hutchinson, Professor -  
Agronomy, Resident Director,  
Northeast Research Station

Charles Johnson, Professor -  
Horticulture, Calhoun Research  
Station

Steve Linscombe, Professor -  
Agronomy, Rice Research Station

Boyd Padgett, Associate  
Specialist - Plant Pathology, Scott  
Research, Extension & Education  
Ctr.

[Back to top](#) | [Weed Control](#) | [Pest Management](#)